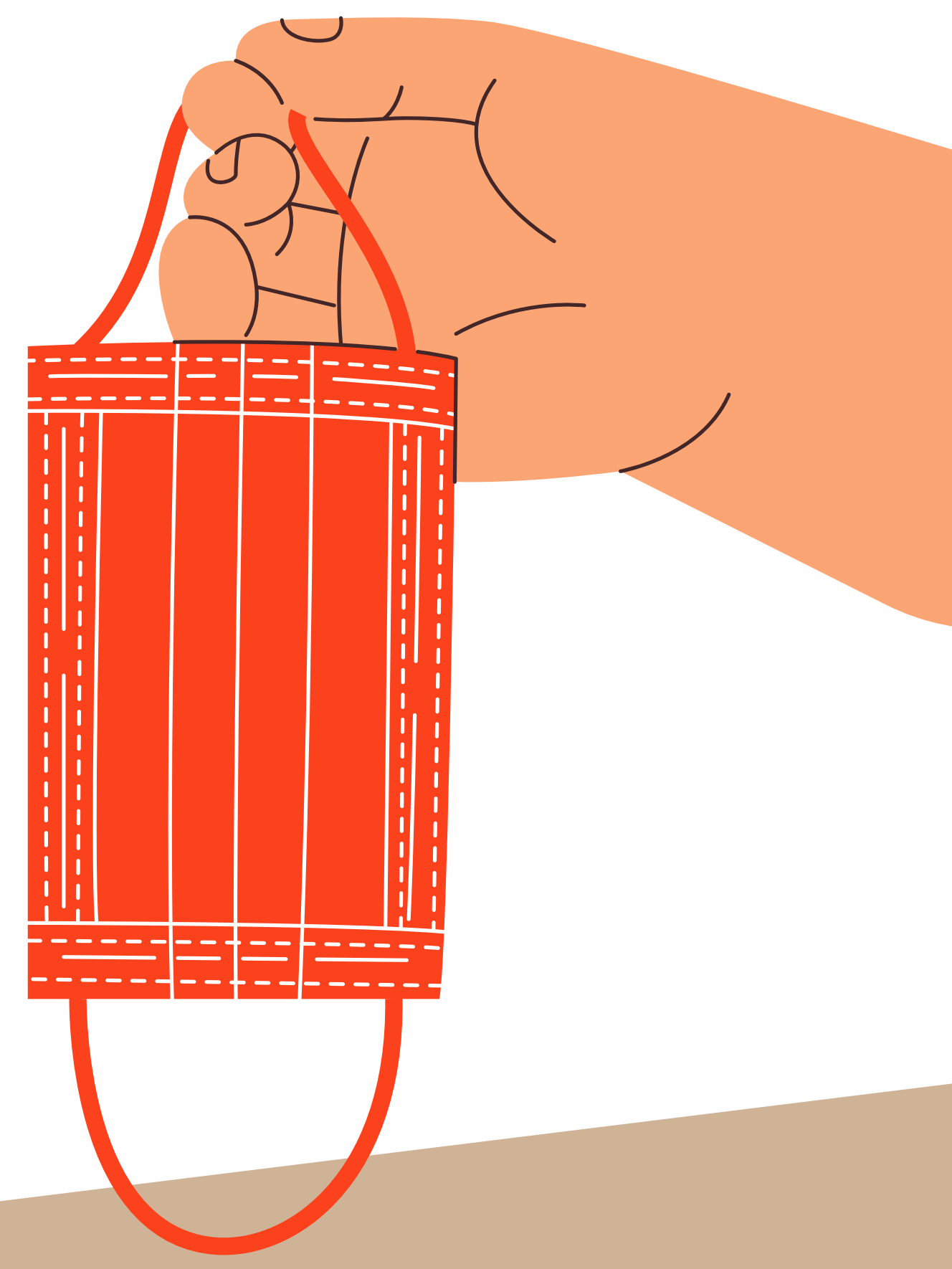




Public Health
Prevent. Promote. Protect.

Butler County
General Health District

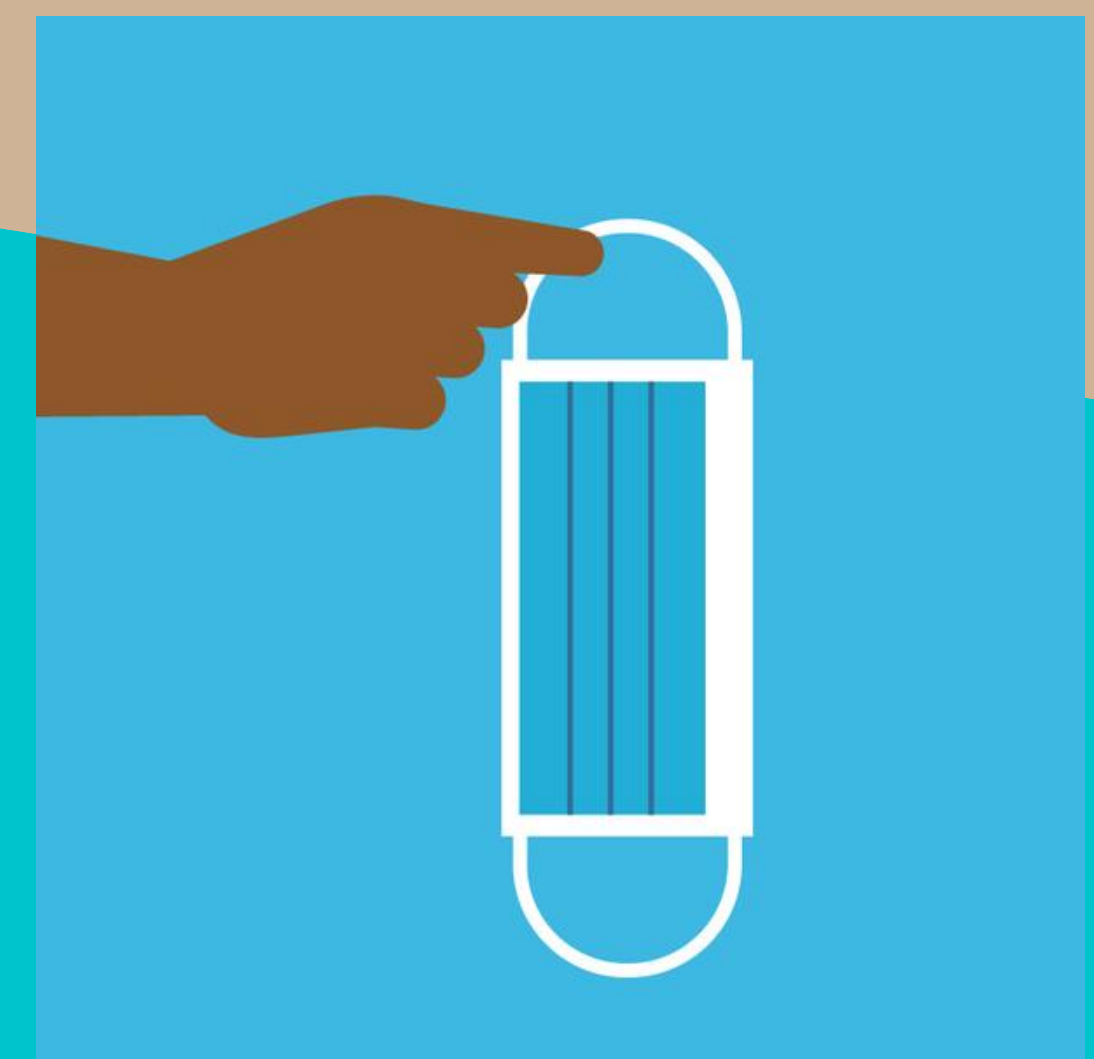
How to properly use a mask



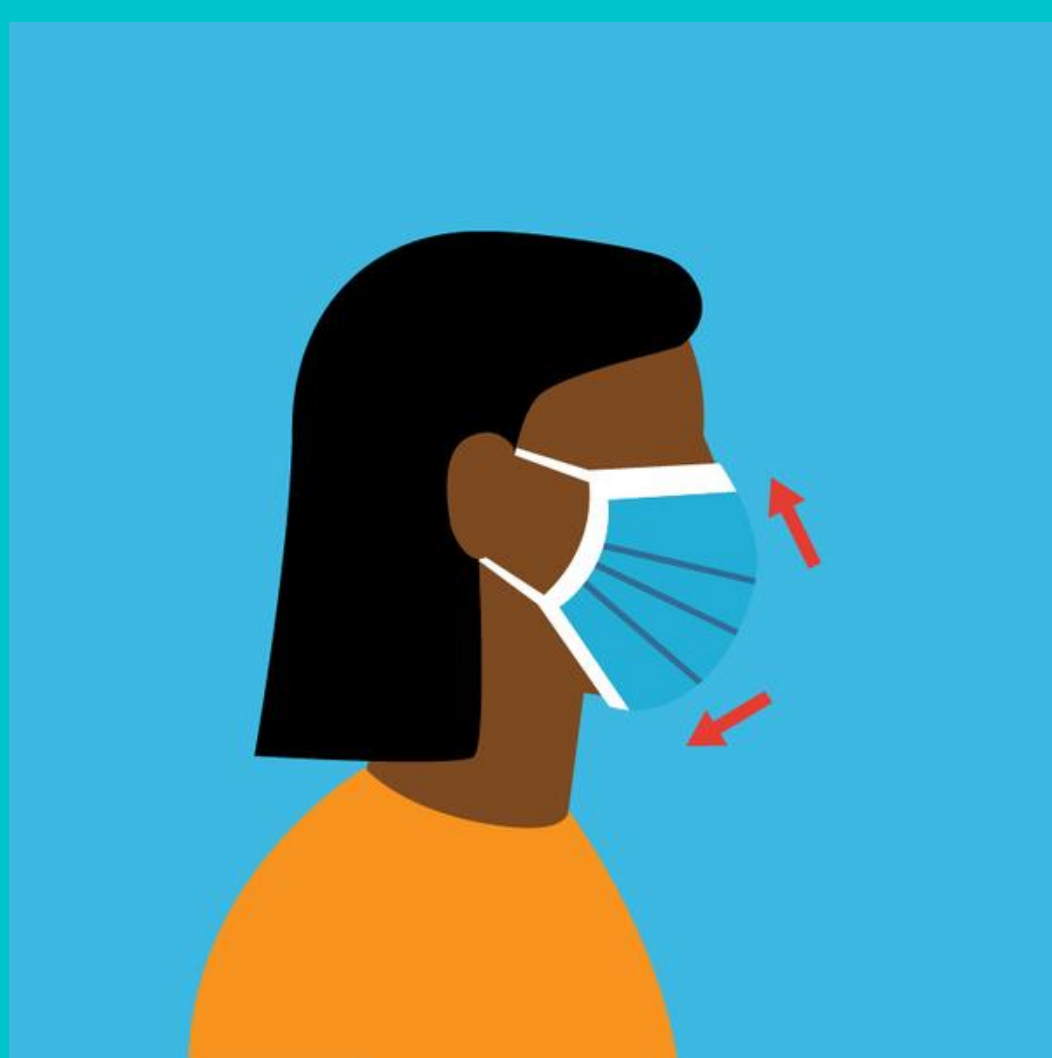
FOLLOW THESE GUIDELINES TO PROPERLY WEAR YOUR MASK



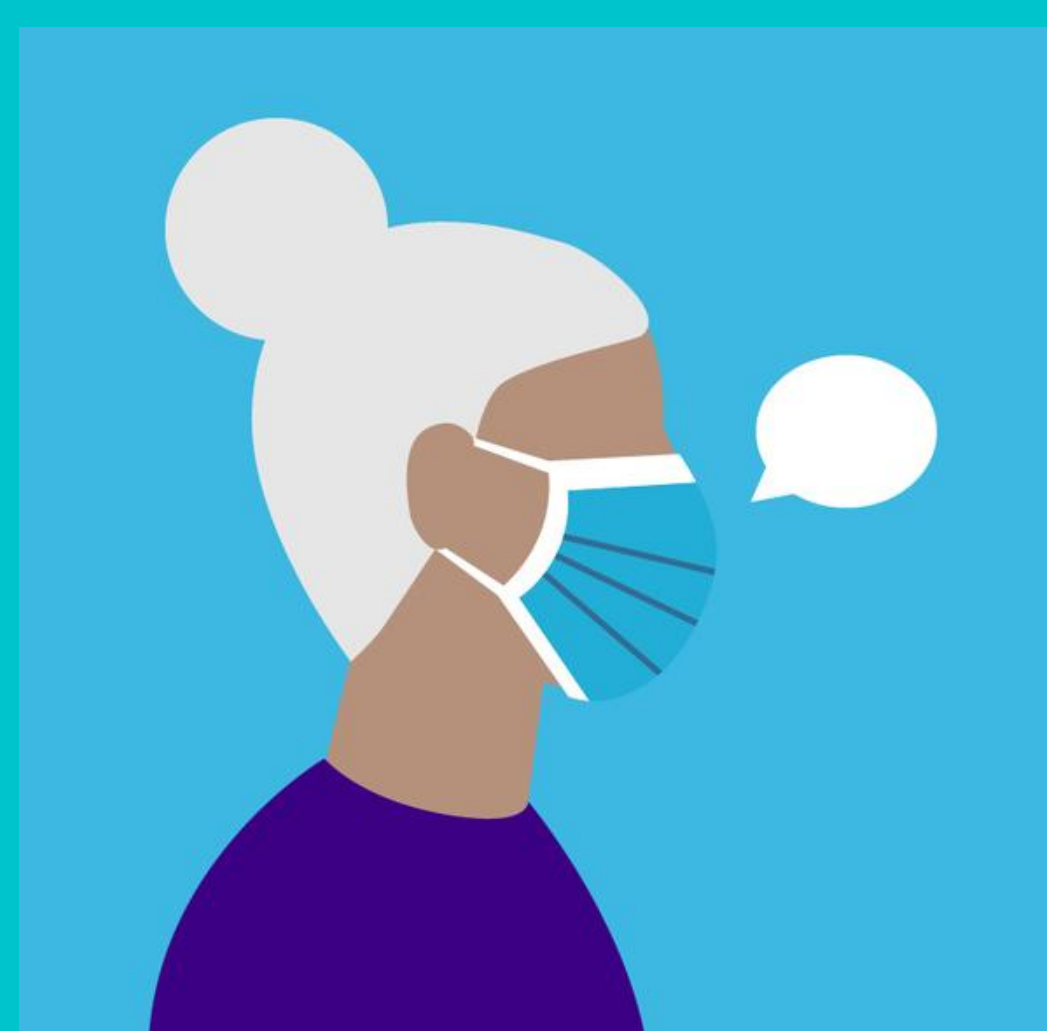
Wash your hands before and after touching the mask



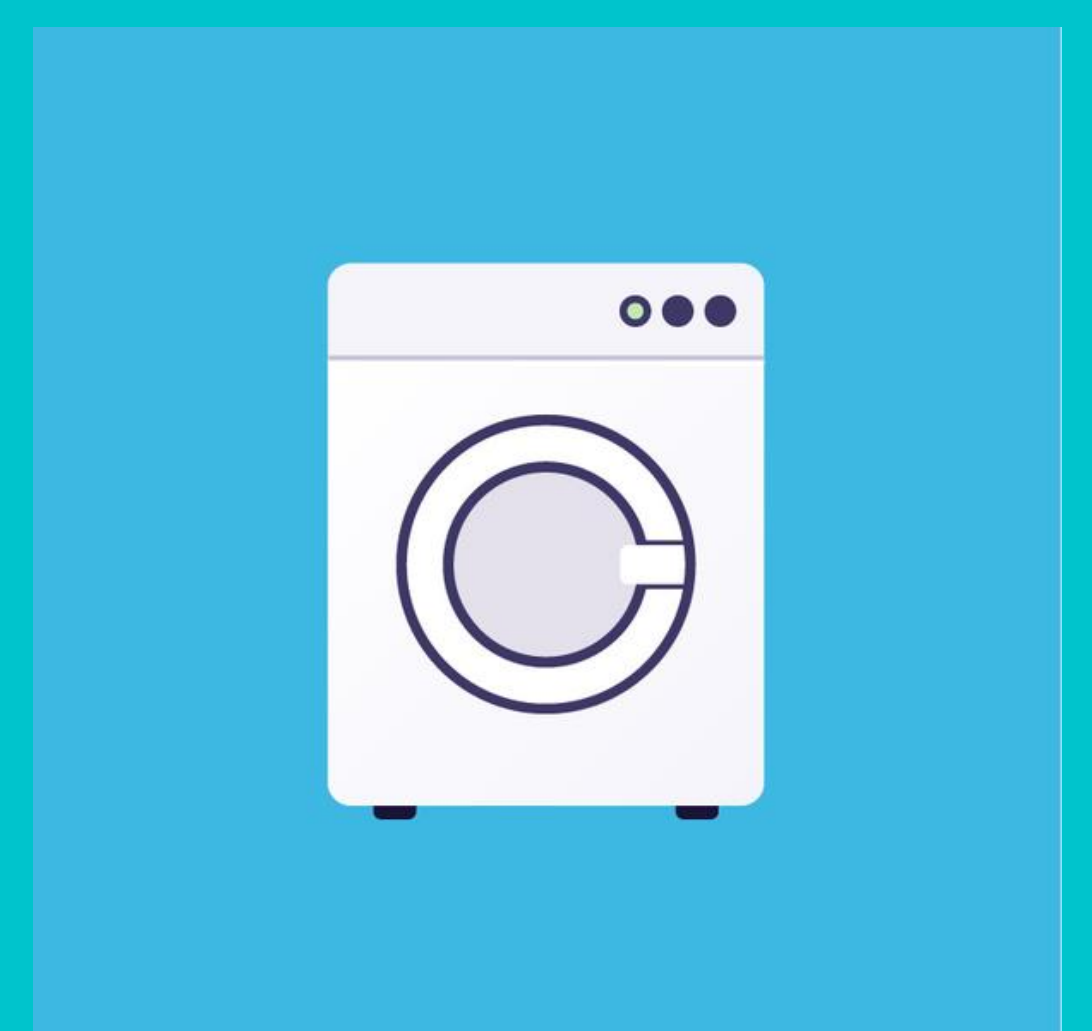
Touch only the bands or ties when putting on and taking off your mask



Make sure the mask fits to cover your nose, mouth and chin.



Make sure you can breathe and talk comfortably through your mask.



Wash reusable masks after each use. If the mask is disposable, discard it when visibly soiled or damaged.

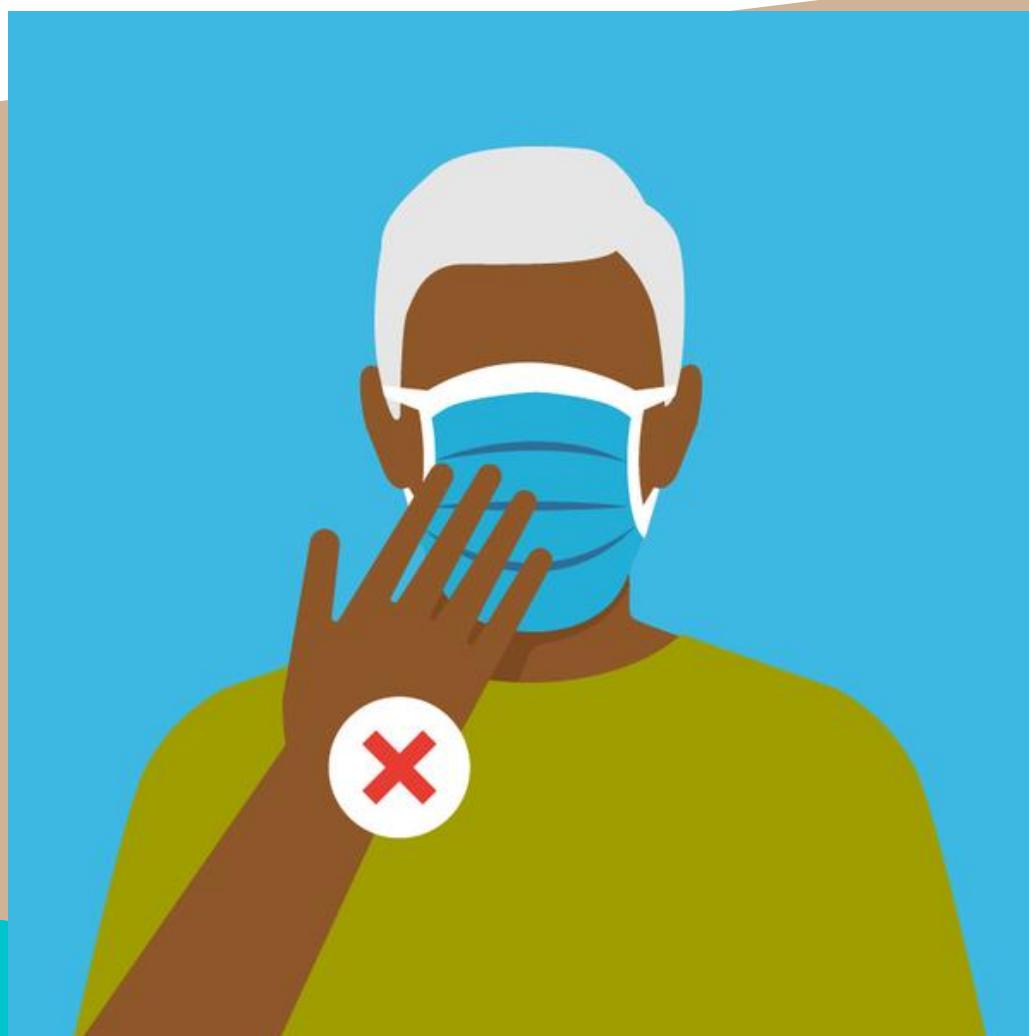


Public Health
Prevent. Promote. Protect.

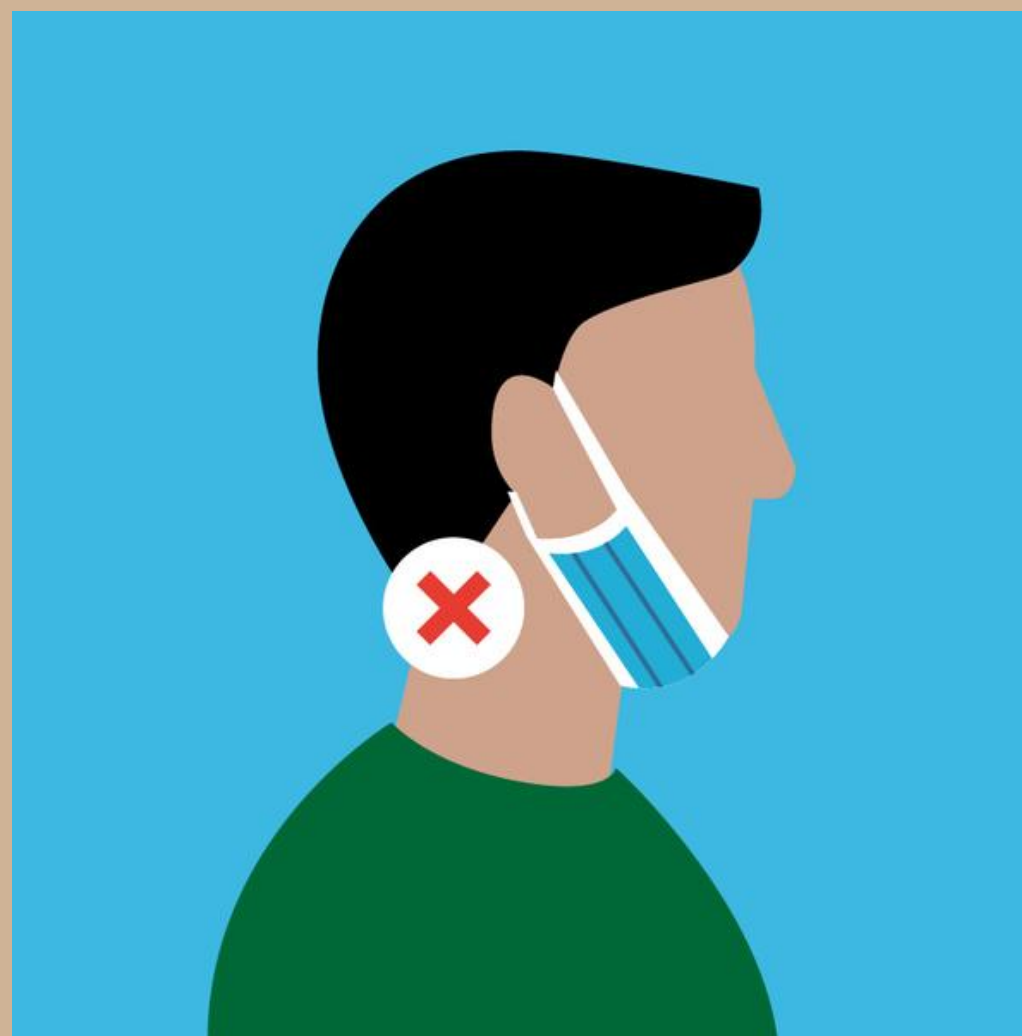
Butler County
General Health District



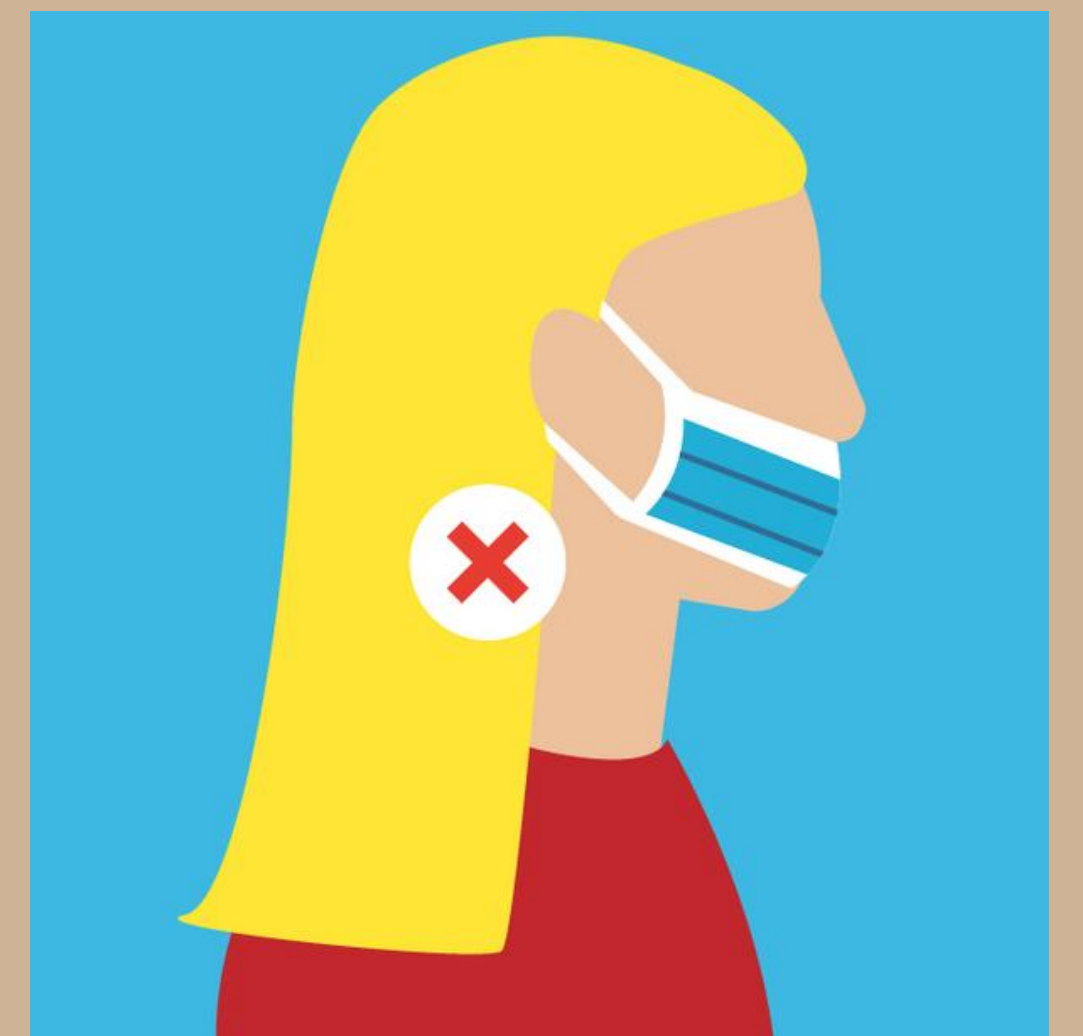
AVOID THESE COMMON MASK MISTAKES



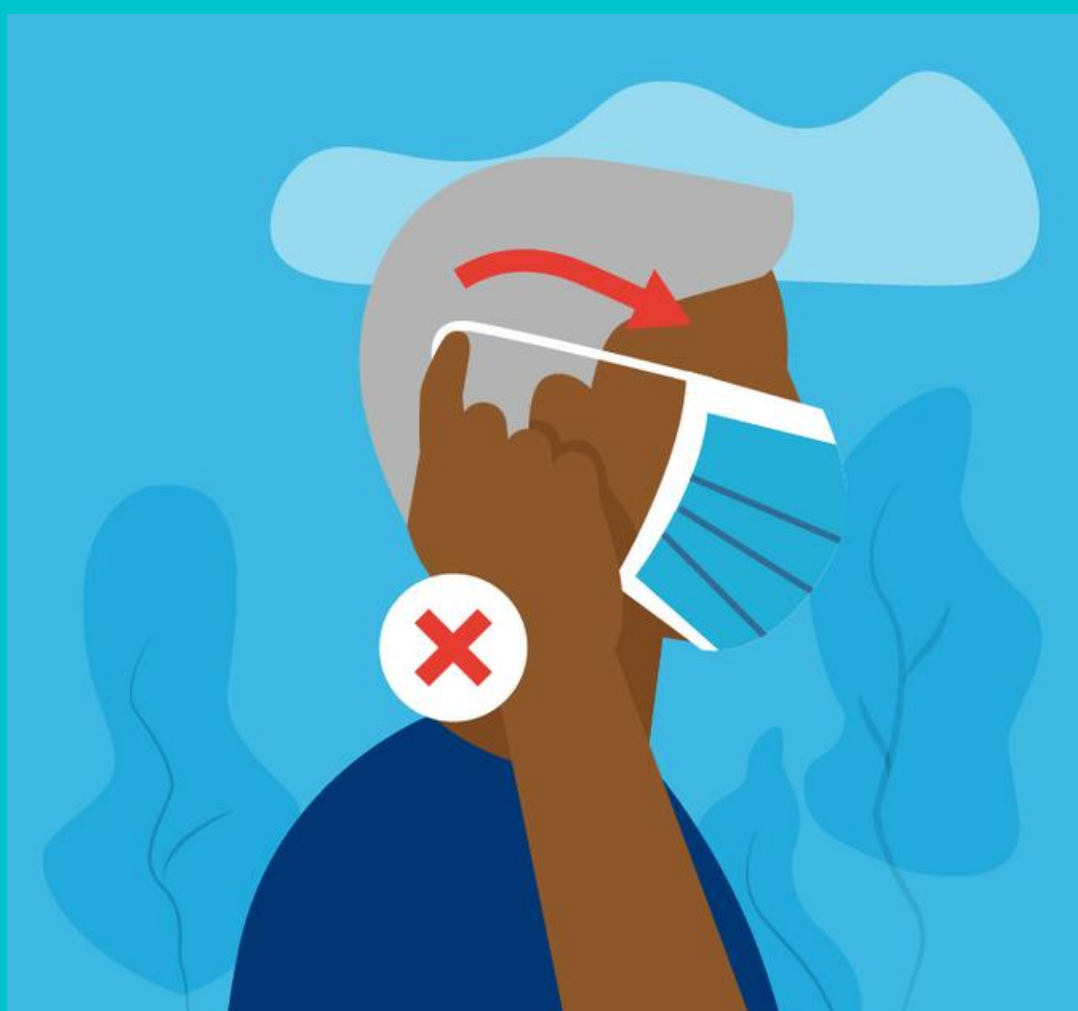
Don't touch your mask while it is being worn.



Don't wear the mask under your chin with your nose and mouth exposed.



Don't leave your nose or mouth uncovered



Don't remove the mask while around others in public



Don't share your mask with family members or friends.

IN OHIO, MASKS MUST BE WORN:

- ✓ In any indoor location that is not a residence, including K-12 schools and other childcare education settings;
- ✓ Outdoors and unable to consistently maintain a distance of 6 ft. or more from individuals who are not members of their household; or
- ✓ Waiting for, riding, driving, or operating public transportation, a taxi, car service or a ride sharing vehicle. This does not apply to private or rental vehicles where members of a household are sharing a vehicle.