

Butler County General Health District's 99th COVID-19 Update (01/15/2022) Confirmed and Probable COVID-19 Cases Reported to Butler County* Butler County Residents, 2020-21

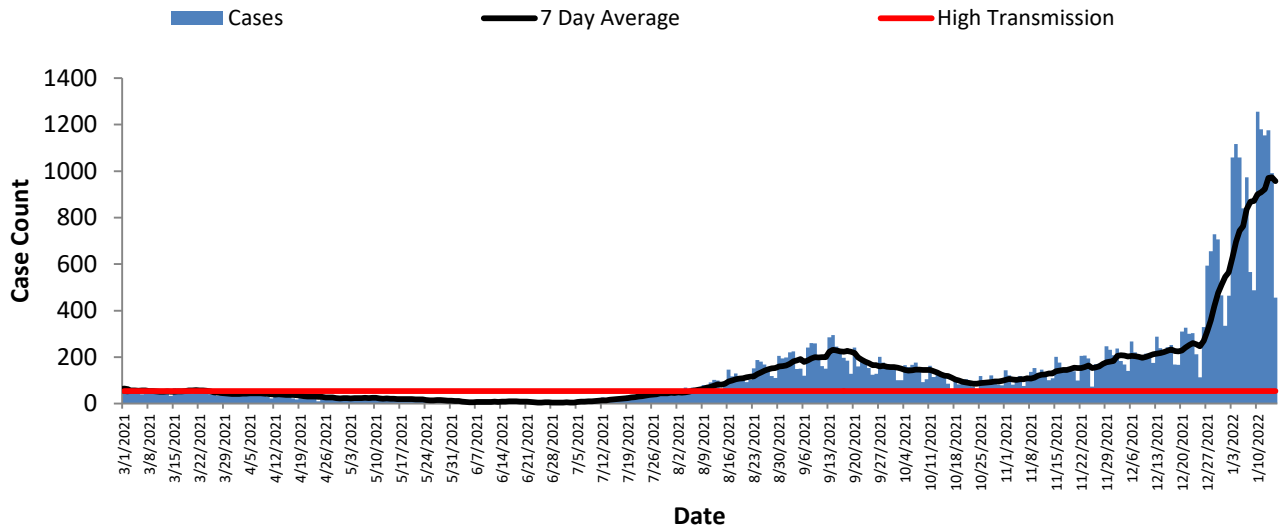
Total # of Cases (01/15):	79,923*
ODH verified Deaths (01/15):	934**
Hospitalizations (01/15):	2,832
First Case Reported:	3/11/2020
Last Case Reported (so far):	01/15/2022
Confirmed Cases:	63,017
Probable Cases:	16,906
Age Range:	<1-103
Median Age:	37
Mean Age:	38.6
Incidence (thru 01/15):	20,860.3 per 100,000
Prevalence (thru 01/15):	20.9% of BC population
7-Day Positivity Rate (01/20):	38.3[#]% of tests performed in BC

Table 1: CDC Indicators		
Indicator	Butler County New Cases over 7 days	Status Level According to CDC
Incidence per 100,000 population	1,748.5 per 100,000	High Spread (over 100 per 100,000)
Positivity Rate	38.32% of tests performed in Butler County	High Positivity (over 10.0% of tests)

This report has transitioned from using the target indicators that Governor DeWine and the Ohio Department of Health had previously set to the CDC's Community Transmission Indicators. The CDC has its own data tracker that is accessible at <https://covid.cdc.gov/covid-data-tracker/#datatracker-home>, which gives a good picture of how the nation as a whole is doing. They also have county tracking information, but as CDC mentions, local reports will be more up-to-date and should be considered more definitive.

This week produced yet another record breaking week, both in terms of absolute case numbers and positivity rate. The positivity rate of 38.3% represents the highest positivity rate seen in Butler County through the course of the pandemic. This is coupled with another record breaking week of 1.75% of the county testing positive in a single week. Since 01/01/2022, 1 out of every 29 residents in Butler County has tested positive for COVID-19.

Figure 1. Cases by Date of Event Since March 1, 2021



All figures show reported cases of COVID-19 in Butler County as of 0800 EST 01/20/2022. Due to delays in reporting, the numbers of confirmed and probable cases on all figures are subject to change between reports and confirmed and probable case counts are likely to increase. *This should not be assumed to be the total disease burden of COVID-19 in Butler County only those that have been laboratory confirmed OR meet ODH probable case criteria AND reported to Public Health.

*Data is provisional - only confirmed or probable COVID-19 cases are included in counts. Report reflects time period since the introduction of SARS-CoV-2 into humans, measured in days. Data accessed from the Ohio Disease Reporting System (ODRS) on 01/20/2022 at 0800 EST.

**Deaths are now reconciled to the Ohio Department of Health's available data to avoid discrepancies between the state and local numbers. ODH's protocol has changed to avoid reconciliation errors and now only includes those deaths that have been reconciled with Vital statistics and may not match what has been reported to the CDC which are provisional numbers. This is a lagging indicator and will be multiple weeks behind.

Vaccination numbers were collected 1200 EST 01/20/2022 from ODH COVID-19 Dashboard and the Innovate Ohio Platform. Vaccinations are considered started on the day an individual receives first dose of a COVID-19 vaccine. Vaccinations are considered completed on the day an individual receives the final recommended dose of a vaccine.

#Gathered from CDC's Data Tracker of Butler County 01/20/2022 0800 EST accessible at <https://covid.cdc.gov/covid-data-tracker/#county-view>

Figure 2. Reported Cases of COVID-19 by Date of Event 2020-2021*

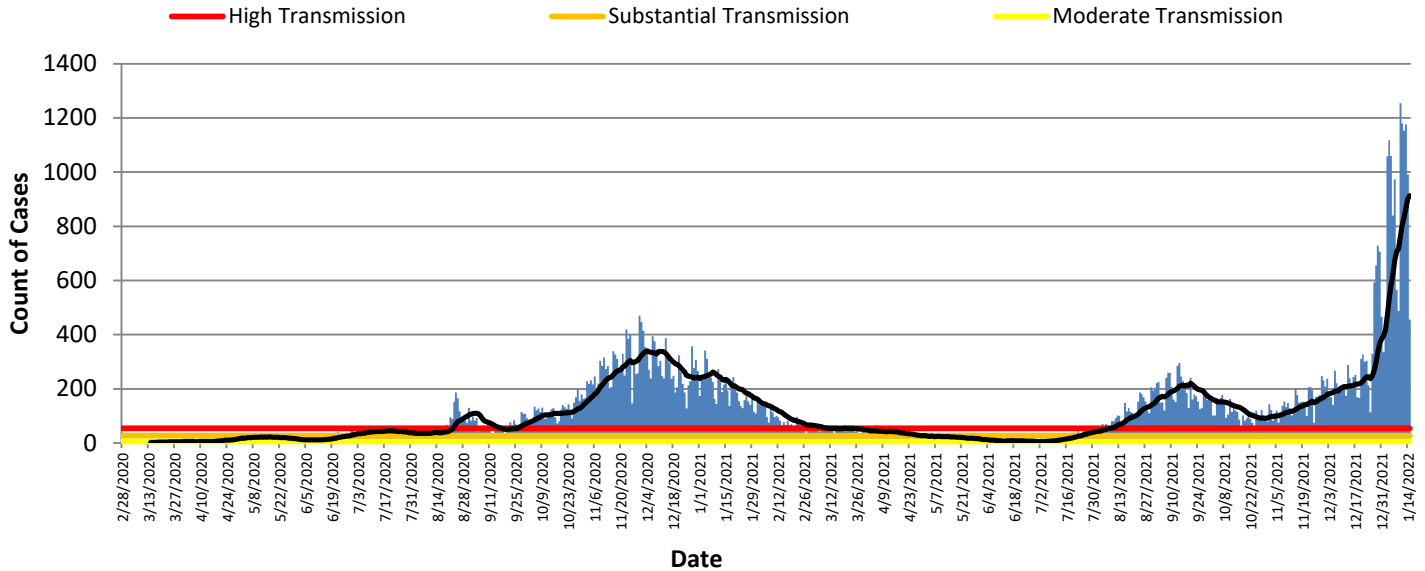


Table 2: Total Reported* Cases by ZIP Code						
ZIP Code	Number of Cases	New Cases (01/09-01/15)	Change in cases from previous 7 days (01/02-01/08)	Transmission	% of Cases	
45011	14663	1356	83 (6.5%)	High	18.3%	
45044	11393	1009	144 (16.6%)	High	14.3%	
45013	10874	978	193 (24.6%)	High	13.6%	
45069	10213	886	-21(-2.3%)	High	12.8%	
45014	9733	812	24 (3.0%)	High	12.2%	
45056	5159	230	-6 (-2.5%)	High	6.5%	
45042	5399	444	79 (21.6%)	High	6.8%	
45067	3265	240	39 (19.4%)	High	4.1%	
45050	2342	182	25 (15.9%)	High	2.9%	
45015	2328	246	56 (29.5%)	High	2.9%	
45241	1162	119	13 (12.3%)		1.5%	
45053	612	36	-8(-18.2%)	High	0.8%	
45005	506	48	8(20.0%)		0.6%	
45064	304	18	0(0%)		0.4%	
45246	152	17	2 (13.3%)		0.2%	
45062	116	8	0 (0%)		0.1%	
Cases lacking zip code information or from zip codes with too few cases	1,702	70	-		2.1	
Butler County (inclusive)	79,923	6,699	622 (10.24%)	High	100%	

Zip-codes that have transmissions not rated have most of their populations outside of Butler County. Zip-codes with too few cases have been removed for privacy concerns.

New Cases are determined by "Date of Event" which is when the case was ill/test was collected. CDC determines new cases by "Date of Report".

Table 2 shows the zip-code level data that is new for this week. **All zip-codes** have rates of disease that once again meet the CDC's definition of a **community of high transmission**. Almost all zip-codes are seeing record levels of transmission.

All figures show reported cases of COVID-19 in Butler County as of 0800 EST 01/20/2022. Due to delays in reporting, the numbers of confirmed and probable cases on all figures are subject to change between reports and confirmed and probable case counts are likely to increase. *This should not be assumed to be the total disease burden of COVID-19 in Butler County only those that have been laboratory confirmed OR meet ODH probable case criteria AND reported to Public Health.

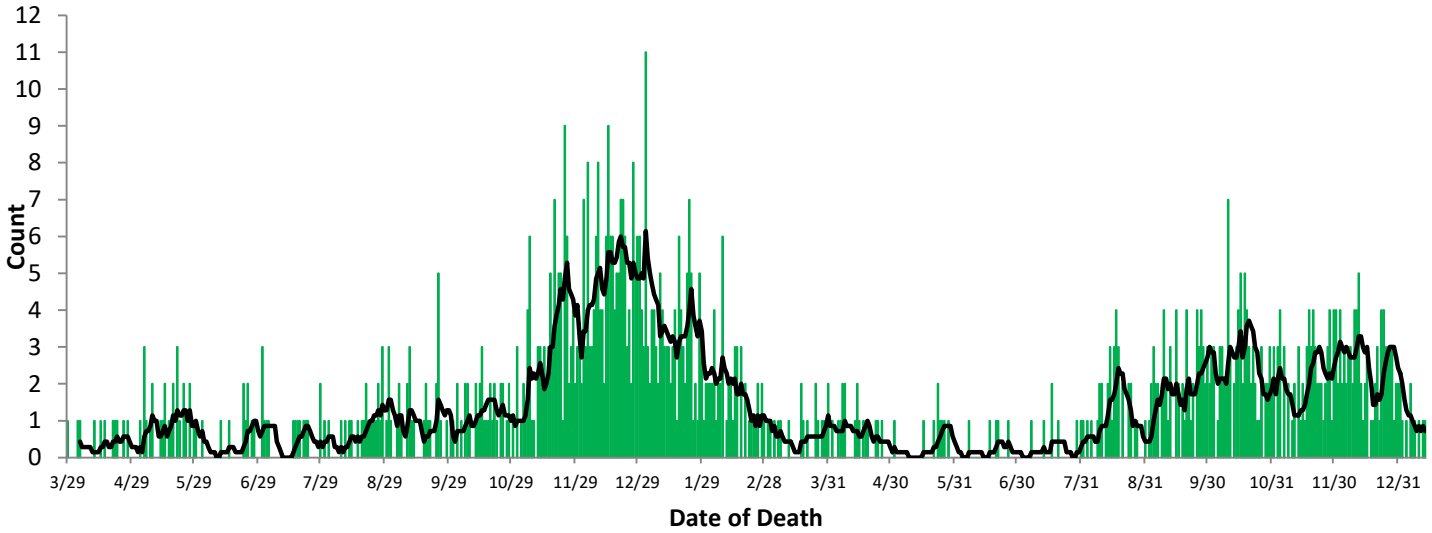
*Data is provisional – only confirmed or probable COVID-19 cases are included in counts. Report reflects time period since the introduction of SARS-CoV-2 into humans, measured in days. Data accessed from the Ohio Disease Reporting System (ODRS) on 01/20/2022 at 0800 EST.

**Deaths are now reconciled to the Ohio Department of Health's available data to avoid discrepancies between the state and local numbers. ODH's protocol has changed to avoid reconciliation errors and now only includes those deaths that have been reconciled with Vital statistics and may not match what has been reported to the CDC which are provisional numbers. This is a lagging indicator and will be multiple weeks behind.

Vaccination numbers were collected 1200 EST 01/20/2022 from ODH COVID-19 Dashboard and the Innovate Ohio Platform. Vaccinations are considered started on the day an individual receives first dose of a COVID-19 vaccine. Vaccinations are considered completed on the day an individual receives the final recommended dose of a vaccine.

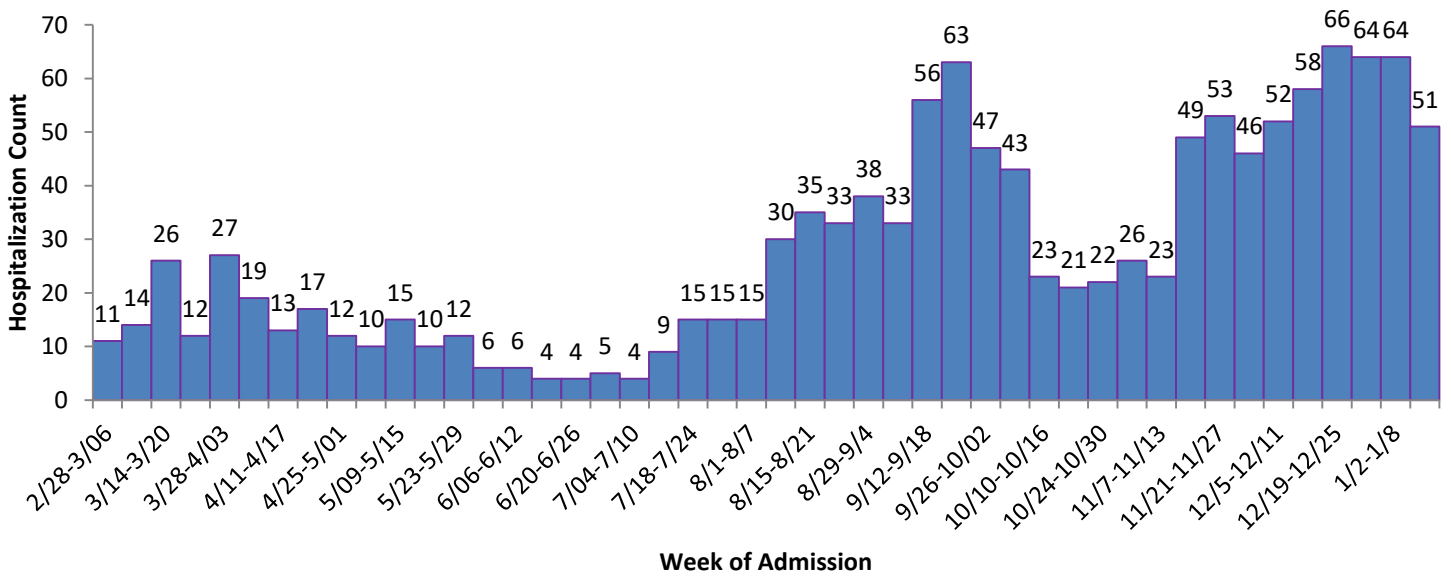
#Gathered from CDC's Data Tracker of Butler County 01/20/2022 0800 EST accessible at <https://covid.cdc.gov/covid-data-tracker/#county-view>

Figure 3. Confirmed COVID-19 Deaths by date of death, 2020-21**



Figures 3 and 4 show severe case outcomes. These are both lagging indicators since it typically takes time for a case to succumb to COVID and well over a month for a COVID-19 death to be verified. Deaths will take about 4-6 weeks to begin to register for last week. Hospitalized case reports are coming in to BCGHD and these are most likely undercounts due to lags in getting reported cases entered in to the Ohio Disease Reporting System.

Figure 4. COVID-19 Hospitalizations of Butler County Residents by Week since the first week of March 2021



All figures show reported cases of COVID-19 in Butler County as of 0800 EST 01/20/2022. Due to delays in reporting, the numbers of confirmed and probable cases on all figures are subject to change between reports and confirmed and probable case counts are likely to increase. *This should not be assumed to be the total disease burden of COVID-19 in Butler County only those that have been laboratory confirmed OR meet ODH probable case criteria AND reported to Public Health.

*Data is provisional – only confirmed or probable COVID-19 cases are included in counts. Report reflects time period since the introduction of SARS-CoV-2 into humans, measured in days. Data accessed from the Ohio Disease Reporting System (ODRS) on 01/20/2022 at 0800 EST.

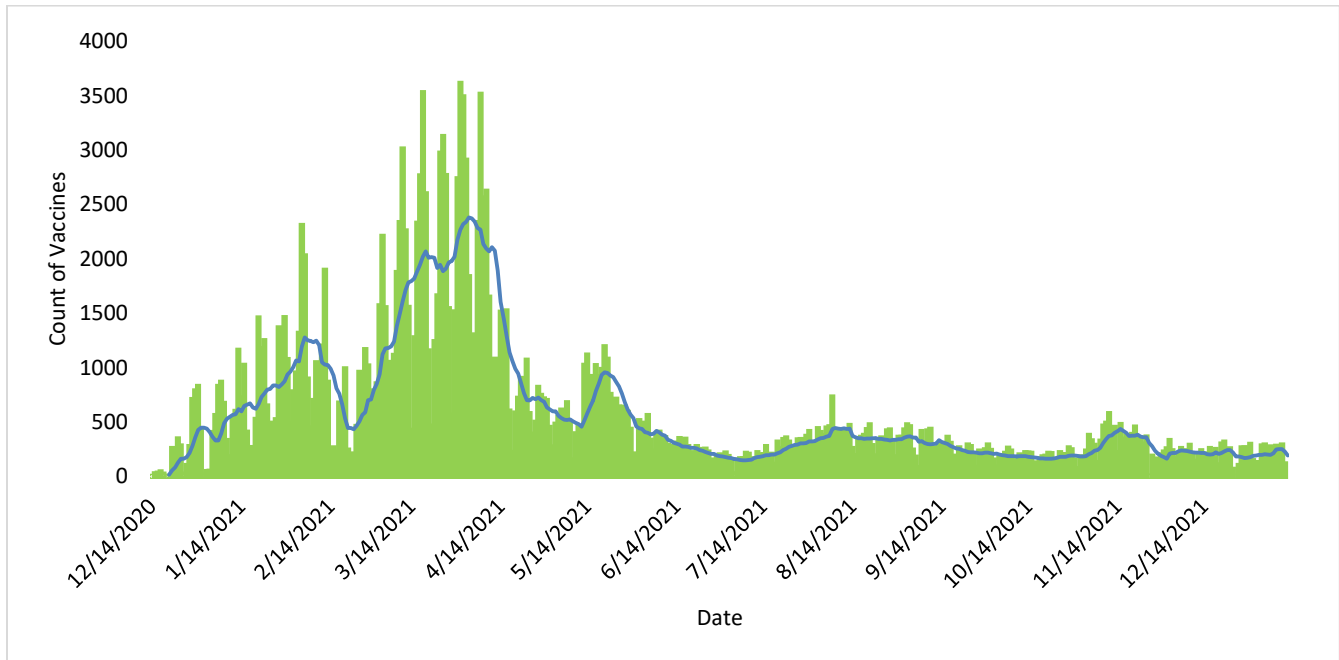
**Deaths are now reconciled to the Ohio Department of Health’s available data to avoid discrepancies between the state and local numbers. ODH’s protocol has changed to avoid reconciliation errors and now only includes those deaths that have been reconciled with Vital statistics and may not match what has been reported to the CDC which are provisional numbers. This is a lagging indicator and will be multiple weeks behind.

Vaccination numbers were collected 1200 EST 01/20/2022 from ODH COVID-19 Dashboard and the Innovate Ohio Platform. Vaccinations are considered started on the day an individual receives first dose of a COVID-19 vaccine. Vaccinations are considered completed on the day an individual receives the final recommended dose of a vaccine.

#Gathered from CDC’s Data Tracker of Butler County 01/20/2022 0800 EST accessible at <https://covid.cdc.gov/covid-data-tracker/#county-view>

Figure 5 shows vaccines started in Butler County by their date of administration. Table 3 shows the counts of new immunizations over the last two week period as well as total estimates by age group.

Figure 5. Vaccines Administered by Date in Butler County, 2020-2021



After an initial surge in vaccine demand seen in late winter and through the spring, demand dramatically dropped off. However, beginning in late July, coinciding with the oncoming school year and rise in cases associated with the Delta variant, there was a slight, but steady increase followed by gradual decline that has continued. A new increase has occurred as 5-11 year olds have become eligible and a decline as those who are most likely to get vaccinated have already done so.

Table 3. Vaccination Statistics by Age Group for Butler County Residents						
Age Group (Years)	Estimated Count of Population # (%)	Count of People Vaccinated (%) as of 12/28/2021	Count of People Vaccinated (%) as of 1/11/2022	Count of People Vaccinated During the last two weeks	Percent Change from 12/28-1/11	Estimated Count of People Unvaccinated
5-11	33,689 (9%)	6,929 (20.6%)	8,033 (23.8%)	1,104	15.9%	25,656
12-14	15,069 (4%)	6,299 (41.8%)	6,489 (43.1%)	190	3.0%	8,580
15-17	15,838 (4%)	7,572 (47.8%)	7,717 (48.7%)	145	1.9%	8,121
18-20	20,735 (5%)	9,305 (44.9%)	9,472 (45.7%)	167	1.8%	11,263
21-24	23,864 (6%)	12,474 (52.3%)	12,803 (53.6%)	329	2.6%	11,061
25-34	48,008 (12%)	26,102 (54.4%)	26,635 (55.5%)	533	2.0%	21,373
35-44	45,659 (12%)	30,714 (67.3%)	31,143 (68.2%)	429	1.4%	14,516
45-54	46,344 (12%)	31,850 (68.7%)	32,188 (69.5%)	338	1.1%	14,156
55-64	48,369 (12%)	37,821 (78.2%)	38,077 (78.7%)	256	0.7%	10,292
65-74	36,132 (9%)	31,478 (87.1%)	31,660 (87.6%)	182	0.6%	4,472
75-84	17,318 (4%)	15,524 (89.6%)	15,627 (90.2%)	103	0.7%	1,691
85+	6,788 (2%)	6,265 (92.3%)	6,324 (93.2%)	59	0.9%	464

#Population estimates from the Ohio Hospital Association and are from December 2020. Does not include Booster doses

All figures show reported cases of COVID-19 in Butler County as of 0800 EST 01/20/2022. Due to delays in reporting, the numbers of confirmed and probable cases on all figures are subject to change between reports and confirmed and probable case counts are likely to increase. *This should not be assumed to be the total disease burden of COVID-19 in Butler County only those that have been laboratory confirmed OR meet ODH probable case criteria AND reported to Public Health.

*Data is provisional – only confirmed or probable COVID-19 cases are included in counts. Report reflects time period since the introduction of SARS-CoV-2 into humans, measured in days. Data accessed from the Ohio Disease Reporting System (ODRS) on 01/20/2022 at 0800 EST.

**Deaths are now reconciled to the Ohio Department of Health’s available data to avoid discrepancies between the state and local numbers. ODH’s protocol has changed to avoid reconciliation errors and now only includes those deaths that have been reconciled with Vital statistics and may not match what has been reported to the CDC which are provisional numbers. This is a lagging indicator and will be multiple weeks behind.

Vaccination numbers were collected 1200 EST 01/20/2022 from ODH COVID-19 Dashboard and the Innovate Ohio Platform. Vaccinations are considered started on the day an individual receives first dose of a COVID-19 vaccine. Vaccinations are considered completed on the day an individual receives the final recommended dose of a vaccine.

#Gathered from CDC’s Data Tracker of Butler County 01/20/2022 0800 EST accessible at <https://covid.cdc.gov/covid-data-tracker/#county-view>

Table 4. Cases Under Age of 17 by Zip –Code 08/01-01/15

Zip Code	Cases since August 1st	Cases per 100,000 past week
45011	1741	1726.1
45069	1195	1957.8
45044	1319	1797.6
45014	909	1809.8
45013	1024	1581.7
45050	254	1623.3
45042	483	1825.3
45056	313	1937.9
45015	276	2001.9
45241	130	-
45067	340	1041.2
45053	51	1517.7
45246	30	-

^Cases are below threshold to release. Population estimates from Ohio Hospital Association 2019

Table 4 shows cases that are ages 17 or younger by zip-code. The importance of this table is to demonstrate that though numbers remain small on an absolute level, relative to the population size it has actually been very high spread since the start of school. Were we to classify ages by zip-code in the same manner of the CDC’s definition, all of Butler County would be considered “high” transmission for school-age students. It is true that children are less likely to develop severe illness, but they are not immune and they can spread it to others. **There have been pediatric hospitalizations of COVID-19 in Butler County.** Since the beginning of the pandemic, **pediatric hospitalizations of COVID-19 have doubled the 5-year average of pediatric hospitalizations of influenza in Butler County.** That figure is not including children hospitalized with MIS-C associated with COVID-19, just those with acute COVID-19 infection.

The best ways to prevent your child from contracting COVID-19 and risking severe outcomes is to get your child vaccinated as soon as they are old enough, and to follow precautions such as wearing masks indoors- especially for those who are too young or cannot otherwise get the COVID-19 vaccination. Table 5 shows the vaccination rates among zip-codes by eligible populations.

Table 5. Percent of the Eligible Population Vaccinated by Zip Code (at least one Dose)

Zip Code	% of the Total Population Vaccinated	% of the Eligible Population Vaccinated	% of 12-17 Year Olds Vaccinated	% of 5-11 Year Olds Vaccinated
45011	56%	61%	49%	24%
45013	55%	58%	40%	15%
45014	65%	69%	55%	23%
45015	47%	51%	35%	9%
45042	52%	55%	36%	13%
45044	56%	61%	50%	20%
45050	64%	68%	54%	28%
45053	56%	59%	45%	13%
45056	45%	46%	45%	40%
45064	45%	47%	24%	10%
45067	43%	46%	35%	10%
45069	74%	78%	66%	43%

All figures show reported cases of COVID-19 in Butler County as of 0800 EST 01/20/2022. Due to delays in reporting, the numbers of confirmed and probable cases on all figures are subject to change between reports and confirmed and probable case counts are likely to increase. *This should not be assumed to be the total disease burden of COVID-19 in Butler County only those that have been laboratory confirmed OR meet ODH probable case criteria AND reported to Public Health.

*Data is provisional – only confirmed or probable COVID-19 cases are included in counts. Report reflects time period since the introduction of SARS-CoV-2 into humans, measured in days. Data accessed from the Ohio Disease Reporting System (ODRS) on 01/20/2022 at 0800 EST.

**Deaths are now reconciled to the Ohio Department of Health’s available data to avoid discrepancies between the state and local numbers. ODH’s protocol has changed to avoid reconciliation errors and now only includes those deaths that have been reconciled with Vital statistics and may not match what has been reported to the CDC which are provisional numbers. This is a lagging indicator and will be multiple weeks behind.

Vaccination numbers were collected 1200 EST 01/20/2022 from ODH COVID-19 Dashboard and the Innovate Ohio Platform. Vaccinations are considered started on the day an individual receives first dose of a COVID-19 vaccine. Vaccinations are considered completed on the day an individual receives the final recommended dose of a vaccine.

#Gathered from CDC’s Data Tracker of Butler County 01/20/2022 0800 EST accessible at <https://covid.cdc.gov/covid-data-tracker/#county-view>